



Critérium

de la première neige

AUDI FIS WORLD CUP - COUPE DU MONDE FIS DE SKI ALPIN HOMMES ET FEMMES



**DU 05 AU 20
DÉCEMBRE 2020**

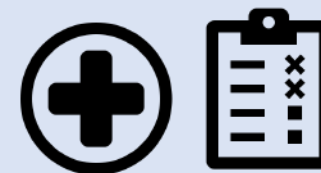


Critérium
de la première neige

AUDI FIS SKI WORLD CUP - COUPE DU MONDE FIS DE SKI ALPIN HOMMES ET FEMMES

Worldcup-valdisere.com
[#criteriumdelapremieren](https://twitter.com/criteriumdelapremieren)

COVID-19 Sanitary protocol Critérium de la Première Neige 2020



Preventive measures & rules published by the organization in collaboration with the FFS & la FIS



AUXI FIS SKI WORLD CUP - COUPE DU MONDE FIS DE SKI ALPIN HOMMES ET FEMMES

Worldcup-valdisere.com
#criteriumdelapremiereneige

SANITARY PROTOCOL

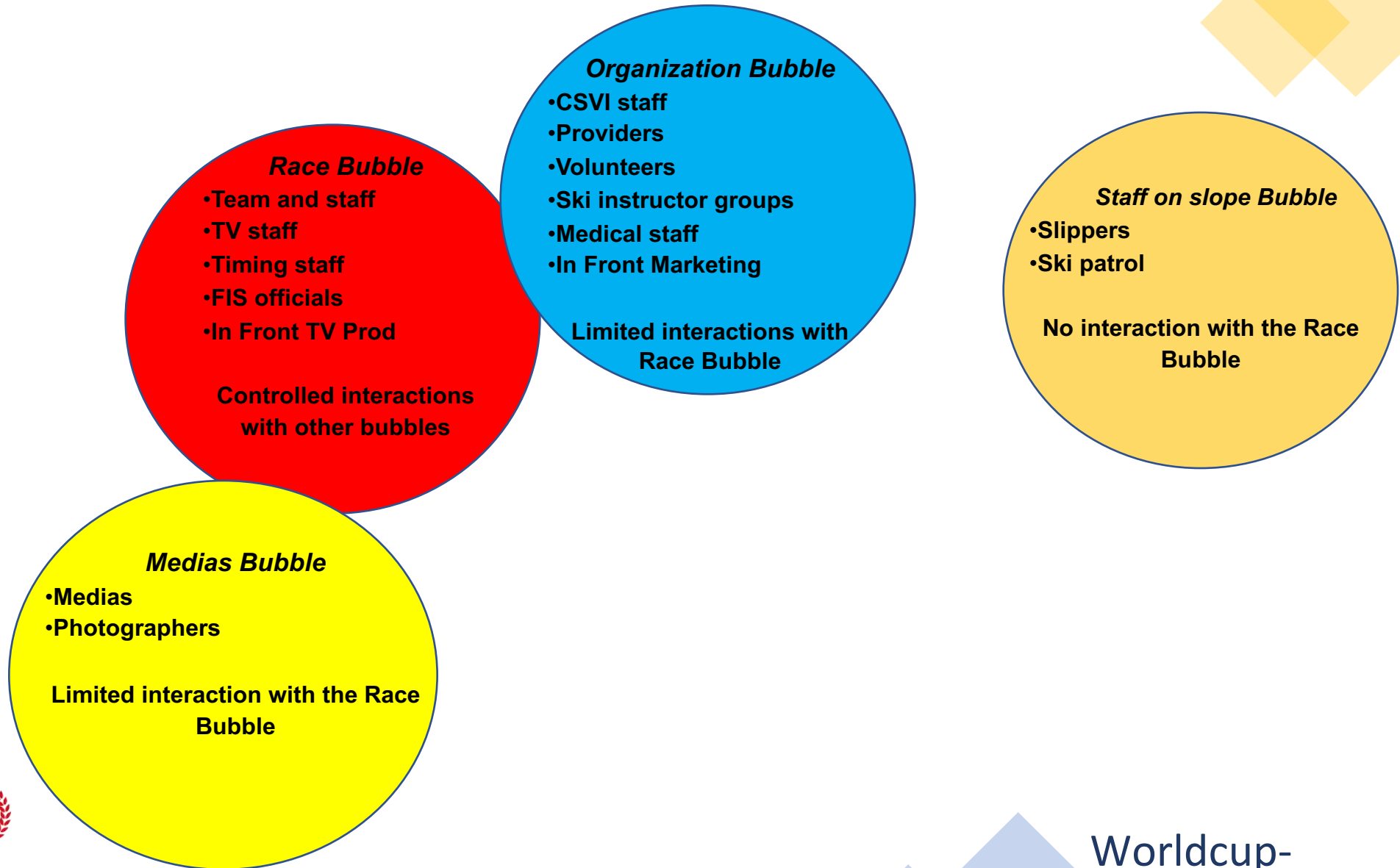
A permanent link with the authorities, the French Ski Federation and the International Alpine Skiing Federation to achieve a health protocol shared with the Ministry of Health and ARS

Recommendations, (may vary):

- **Limitation of interactions** (establishment of health families)
- **An airtight racing bubble** with very strict protocols
- Respect for **physical distancing** and barrier gestures in all our areas
- A policy of nasopharyngeal RT-PCR tests implemented for racing bubbles, organization and medias bubbles
- Mask must be worn in all indoor and outdoor areas



SANITARY BUBBLES



TESTING POLICY (refer to test protocol)

- Strict compliance with the rules of the Ministry of Health and ARS
- In the rules of mandatory tests prior to the test in order to be able to withdraw accreditation
- To withdraw accreditation for all persons belonging to the Bubbles Race, Organization and Medias, it is necessary to present:
 - RT-PCR 0 naso-pharyngeal test, performed no later than 72 h prior to arrival at the site
 - or an Abbott or Roche serological test >0 less than 8 weeks old
 - or a RT-PCR test >0 less than 3 months and more than 2 weeks old
 - Complete the FIS questionnaire
- Obligation to submit the FIS questionnaire completed and signed to come work on the event for all people belonging to the Bubble Staff Piste.
- No test required for Bubble Staff Piste
- The people belonging to the Bubbles Organization and Medias undertake not to leave Val d'Isère between the technical races and speed races
- **Compulsory** : any person leaving the event site must show a new test result if they wish to be accredited again
- The Organizing Committee strongly recommends to all people of the bubbles identified in this protocol to download the application «TousAntiCovid» and to get vaccinated against the flu.
- More details in the test protocol regarding the test policy put in place.

SANITARY MEASURES

 Goals & basic principles

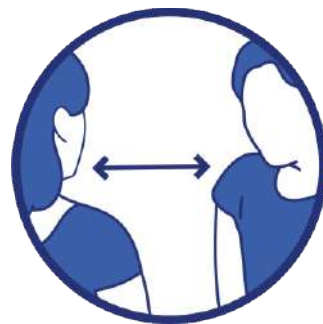


Preserve the health of athletes and all stakeholders in the event as well as the continuity of races



PROTECTION

Mask compulsory
Regular use of hydroalcoholic gel



DISTANCING

2 meters distance min.



SECURITY

No interaction with the public
(autographs and selfies are strictly prohibited)

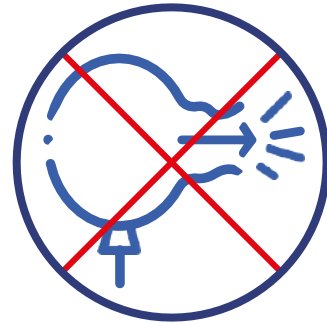
SANITAIRY MEASURES

 Goals & basic principles



TESTING

Subscribe to the Covid-19 testing policy presented above, and related to the Ministry of Health



CONFINEMENT

Respect your family and have no contact apart from those planned and secured



TRANSPARENCY

Report all symptoms to doctors and the organization
Identify at-risk contacts

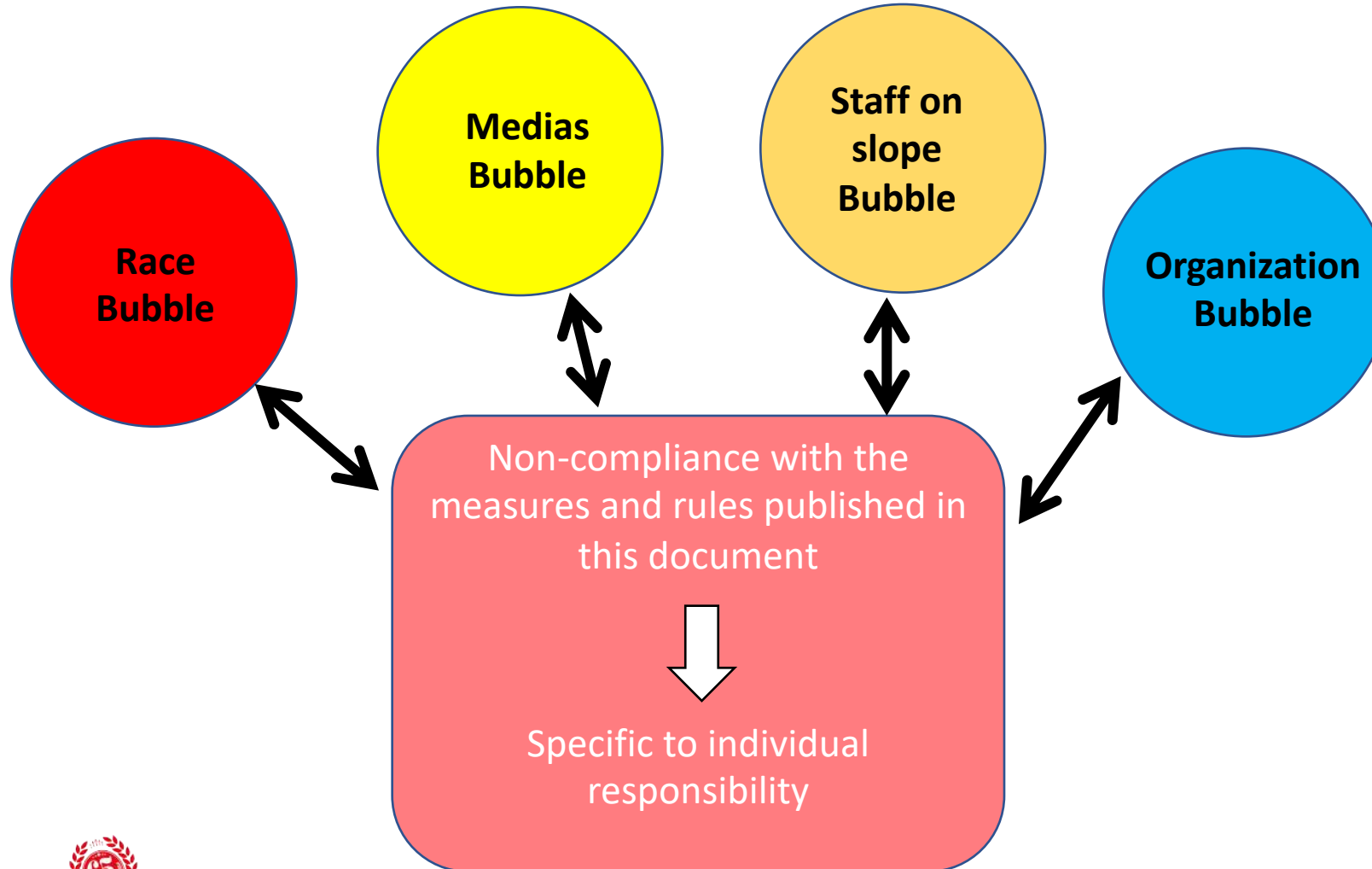


VENTILATION

Ventilated spaces

SANITAIRY MEASURES

 Breach of health protocol



SANITARY MEASURES BY AREA



Waiting areas / Changing tents / Warm up tent

- ✓ Areas will be reorganized to limit the flow of people
- ✓ Setting up of a traffic direction
- ✓ Limit the number of people in the areas according to the square metre per person: To date =>4 square meters per person
- ✓ Limit these areas to race bubble only
- ✓ No volunteers in these areas, only outside for access control



SANITARY MEASURES BY AREA



Equipment preparation areas

- ✓ One waxing box per Nation or the possibility of sharing the box with another Nation provided that these two Nations are in the same hotel
- ✓ Access limited to two persons per box
- ✓ Limite this areas to the race bubble



SANITARY MEASURES BY AREA



Start & Finish areas / Mixed zone (plan in annex)

- ✓ Areas will be reorganized to limit the flow of people
- ✓ Setting up of a traffic direction
- ✓ Limit the number of people in the areas according to the square meter per person. To date => 4 square meters per person
- ✓ Limit these areas to race bubbles only
- ✓ No volunteers in these areas, only outside for access control
- ✓ Athletes can change in the designated tent in the finish area



SANITARY MEASURES BY AREA



Team Hospitality (plan in annex)

- ✓ Organisation of traffic lanes, seating areas and other areas limiting flow
- ✓ Setting up of a traffic direction
- ✓ One way identified entry and exit
- ✓ Limit the number of people in the areas according to the square meter per person. To date => 4 square meters per person
- ✓ Limit this area to the race bubble
- ✓ Catering in compliance with sanitary rules
- ✓ Recommend individual portions and supply of bottles
- ✓ Provision of hydroalcoholic gels
- ✓ Regular cleaning of the area: disinfection at night after departure of last occupant + morning before arrival of occupants + during slope inspection + immediately on evacuation of all seating areas
- ✓ No volunteers in these area, only outside for access control
- ✓ Strengthen entry access control



SANITARY MEASURES BY AREA



Accommodation & meals

- ✓ Teams on the same floor, access to hotel facilities via stairs (to avoid elevators); separation of teams from other hotel guests
- ✓ Keep distance between twin beds
- ✓ If possible, separate access for the team
- ✓ Additional cleaning/disinfection plans prior to arrival
- ✓ Hand sanitizing system and paper towels available at several locations in the accommodation, including rooms
- ✓ Avoid cleaning rooms when team members are present. (Avoid contact with cleaning staff)
- ✓ Provide isolation rooms if required
- ✓ Rules for the use of common facilities (gymnasium, meeting rooms)
- ✓ Separate dining rooms/areas from other hotel guests
- ✓ Prepare as much as possible the catering area (s) before the teams arrive
- ✓ Sufficient water/drinks already on tables
- ✓ No buffet style meals
- ✓ Prefer self-service dishes already prepared or served at the table – use of sanitary gloves compulsory



SANITARY MEASURES BY AREA



Transport services / Car Park

- ✓ Regular cleaning of transport vehicles
- ✓ Wipes and gels available for all vehicles
- ✓ Driver and passengers must wear a mask
- ✓ One assigned driver per vehicle



Lift access (under the authority of the Ministry of Transport – plan in annex)

- ✓ Mask must be worn on all lifts
- ✓ A car of the funicular will be reserved for the race bubble, then, an other for the organization bubble
- ✓ The cabins of the gondolas will be organized in groups
- ✓ Disinfection according to recommendations of Ministry of Transport and/or ski area operator



SANITARY MEASURES BY AREA



Accreditation Zones (plan in annex)

- ✓ Withdrawal of accreditation for teams (athletes and staff) at the Club des Sports (Organizing Committee). Area reserved exclusively for the race bubble. One person per team must withdraw accreditations, the identification armbands and the course access (ex: Team Captain or Head Coach). The guest accreditations will also be withdrawn by the same person
- ✓ Withdrawal of accreditations of organization bubble members in the large hall of the Club des Sports (former restauration space)
- ✓ Withdrawal of medias accreditations at the medias center (CHO)
- ✓ Provision of hydroalcoholic gel
- ✓ Setting up of a traffic direction
- ✓ Regular disinfection of these areas



SANITARY MEASURES BY AREA



Race office & Team Captain Meetings

- ✓ Racing office at the Sports Club (Organizing Committee) in a limited access zone to the Race bubble
- ✓ TCM reserved for the Organizing Committee, FIS staff, doctors, the race office (secretary and technician), Swiss timing, 1 representative per Nation and 1 representative of SRS
- ✓ Access control at the entrance of the TCM situated at the medias center (CHO) => no public
- ✓ No aperitif after the TCM
- ✓ TCM broadcast live on the Criterium website www.worldcup-valdisere.com
- ✓ Online program on the Criterium website after the TCM



SANITARY MEASURES BY AREA



Meeting rooms (Jury)

- ✓ Limit the number of people
- ✓ Two jury rooms: one at the Club des Sports and one at the Daille in the offices located above the TC10
- ✓ Provision of hydro-alcoholic gel and disinfecting wipes
- ✓ Regular cleaning of this room



Medias Center

- ✓ Areas will be reorganized to limit the flow of people
- ✓ Setting up of a traffic direction
- ✓ Limit the number of people in the areas according to the square meter per person. To date => 4 square meters per person
- ✓ Limit this area to the Medias Bubble
- ✓ Closed press conference and webcast on the Criterium website
- ✓ Limit the number of journalists during the event



SANITARY MEASURES BY AREA



Bib draw

- ✓ No public draw



Winner photos / Official awards ceremonies

- ✓ Awards at the end of the races in the finish area (limited to race bubble)
- ✓ Respect for physical distancing between athletes themselves and between athletes and journalists during the podium photo
- ✓ No handshakes when handing out trophies
- ✓ Athletes must stay on the podium
- ✓ No public ceremony in the resort center but only after the race in the finish area



SANITARY MEASURES BY AREA



Radio center

- ✓ Disinfect radios regularly
- ✓ One volunteer assigned to radio with mask and mandatory gloves
- ✓ Mandatory mask



TV Compound

- ✓ Limited access to TV only (IN FRONT)



Animations

- ✓ No Public animations



SANITARY MEASURES BY AREA



Gym center

- ✓ If the resort is closed, the gym center will be privatized for the teams. You must call the gym center to reserve your slot in advance (tel: +33 (0)4 79 04 26 01). If the station is open, the gym center will be open to the public so privatization will not be possible
- ✓ You must present your accreditation to access the sports center
- ✓ Access to the Sports Area will be made by stairs, with a direction of circulation entering and leaving + floor marking
- ✓ The outdoor lockers and showers are accessible to users. In addition an area is delimited at the entrance to the space
- ✓ The collective change rooms are closed. Users come in sports suits adapted to the activity and will leave in the same outfit. They just need to have a bag with the towel and a pair of clean shoes for rooms
- ✓ Weight machines in both rooms will be spaced or condemned in order to comply with the distancing rules, it will be possible to accommodate 50 people maximum: 20 pers. in the room strength training and 30 pers. in the cardio area
- ✓ The Space will be regularly cleaned and disinfected by our teams during the day. Disinfectant products are available to customers to clean equipment



PLAN – ACCREDITATIONS AREA

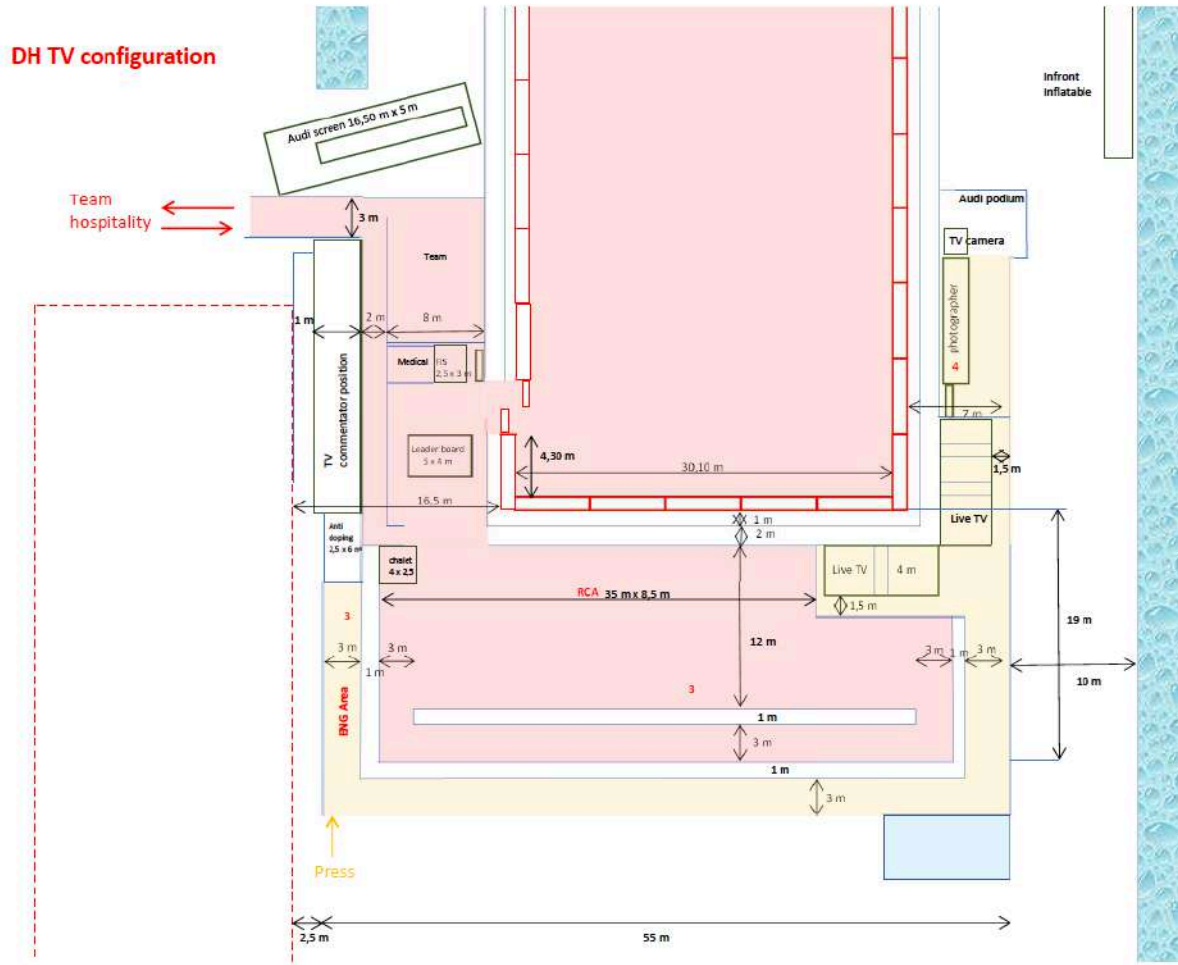
DES ZONES DÉDIÉES



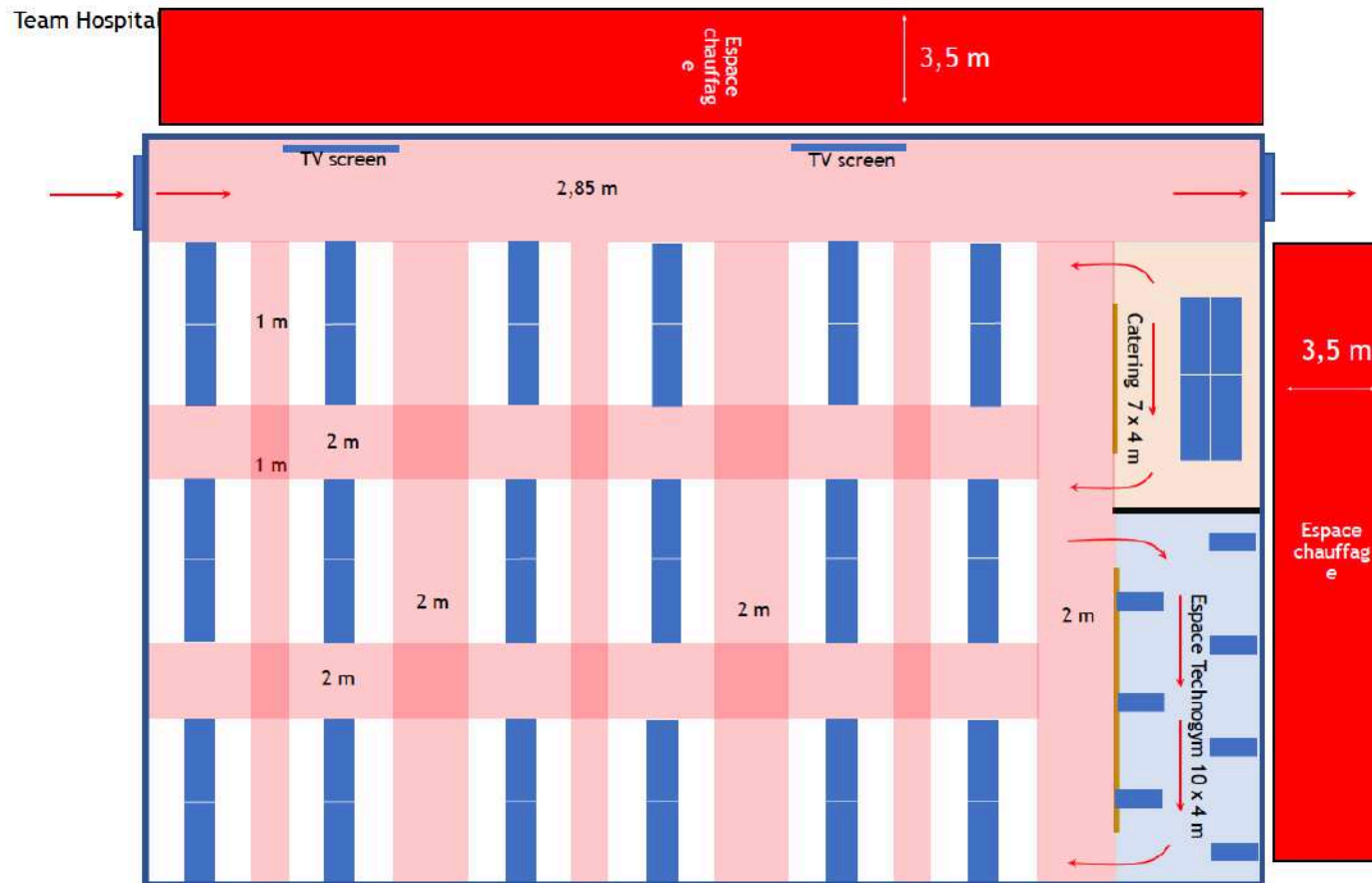
PORT DU MASQUE OBLIGATOIRE
À L'INTÉRIEUR COMME À L'EXTÉRIEUR



PLAN – MIXED ZONE



PLAN – TEAM HOSPITALITY

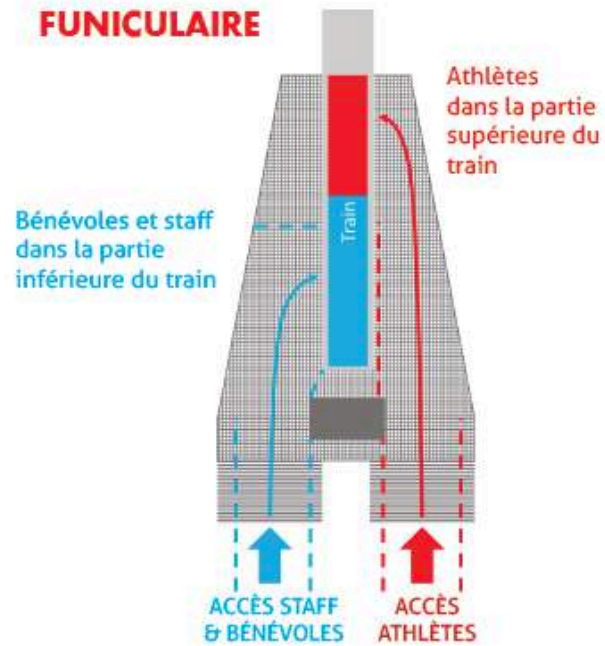


- Cloison haute Ht 2,10 m
- Cloison basse Ht 1,10 m
- 2 tables de 2,20 m soit 4,40 m x 0,80 m
5 + 5 personnes
Soit 180 places

1 m : 0,66 cm

PLAN – LIFT ACCESS (under the authority of the Ministry of Transport)

FUNICULAIRE



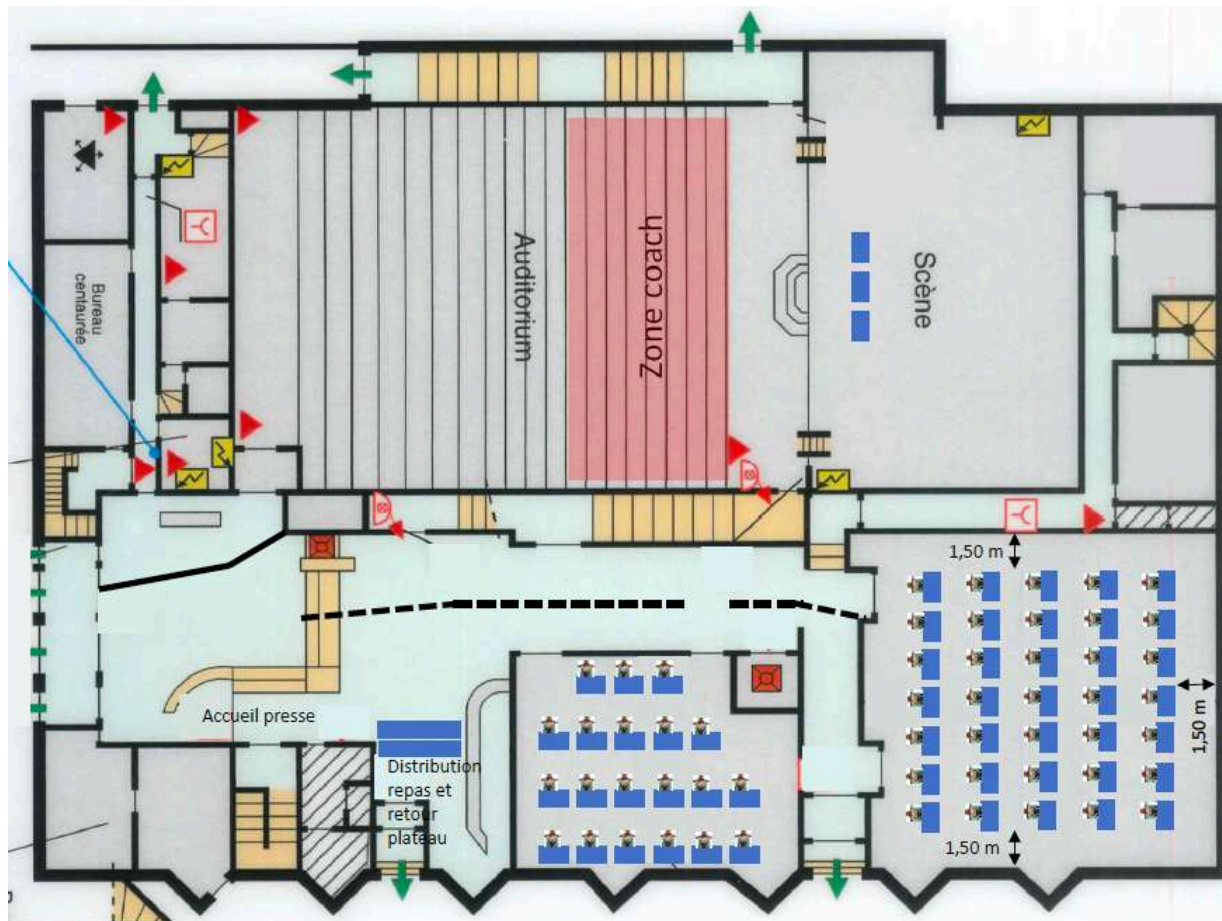
ACCÈS RÉSERVÉS POUR LA BULLE COURSE

- POUR CHAQUE REMONTÉE MÉCANIQUE DESSERVANT LA COURSE.
- LE STAFF ACCÈDE AUX REMONTÉES PAR UN AUTRE ACCÈS.
- POUR LES REMONTÉES CABINES, LES FILES EMBARQUENT PAR ALTERNANCE.
- LE PORT DU MASQUE EST OBLIGATOIRE À BORD DES REMONTÉES



PORT DU MASQUE OBLIGATOIRE
À L'INTÉRIEUR COMME À L'EXTÉRIEUR

PLAN – MEDIAS CENTER – Surface Auditorium 388m²



1 m : 0,437 cm

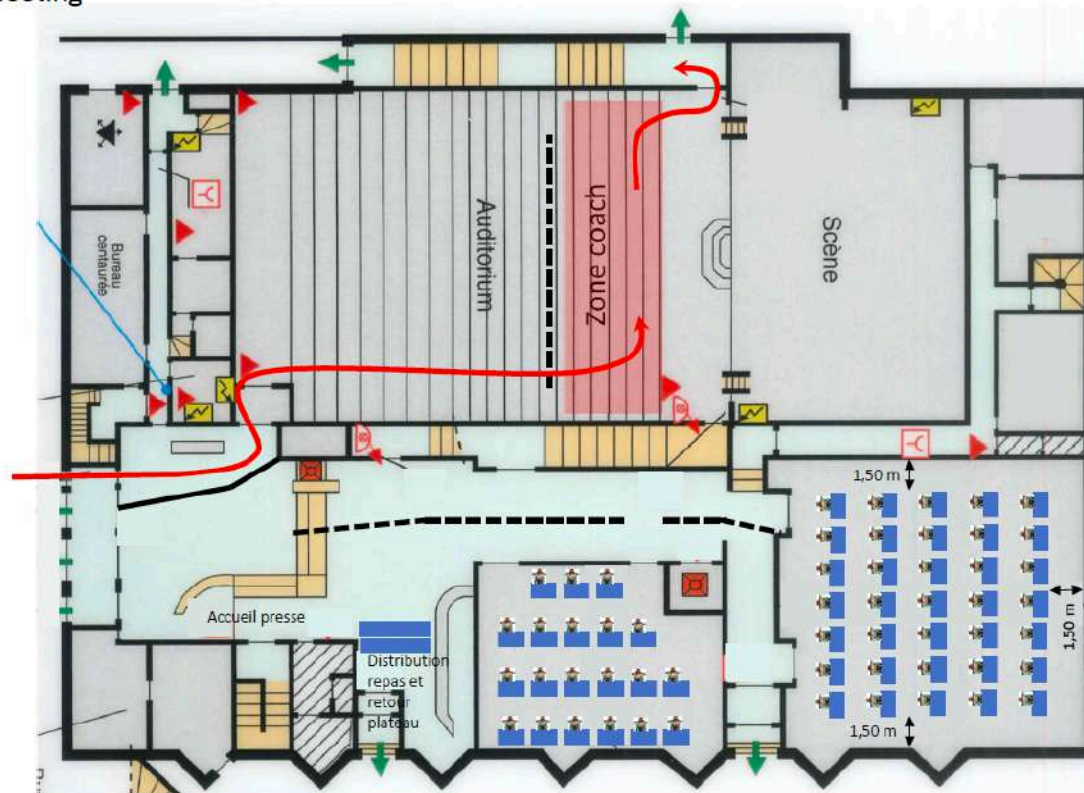
55 places presse
et photographes



PLAN – TEAM CAPTAIN MEETING-

Surface Auditorium 388m2

Captain meeting



1 m : 0,437 cm

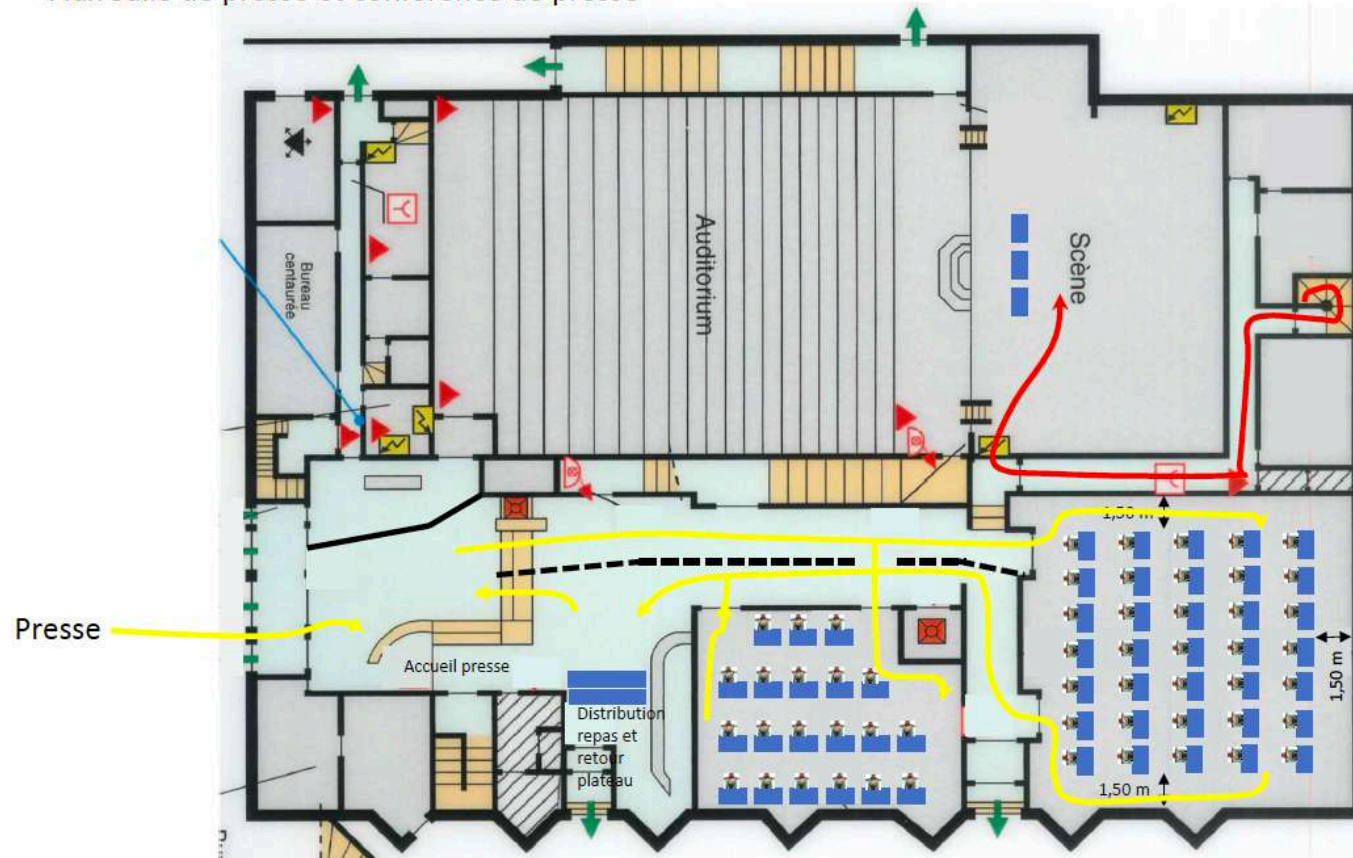
55 places presse
et photographes



PLAN – Circulation flows within Medias Center

Surface Auditorium 388m²

Flux Salle de presse et conférence de presse



1 m : 0,437 cm

55 places presse
et photographes

